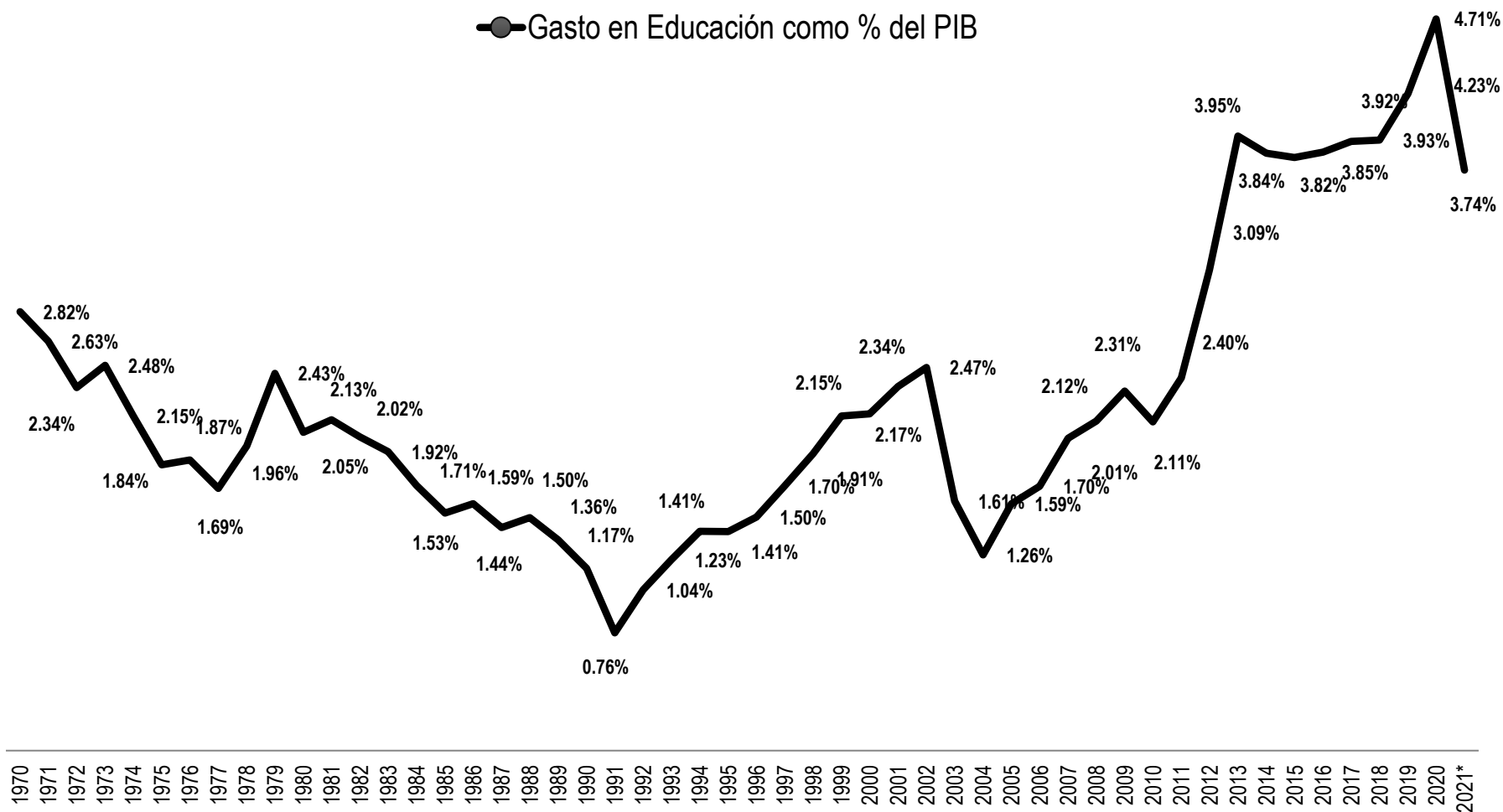


## Ejecución del Ministerio de Educación y Función Educación 1970-2021

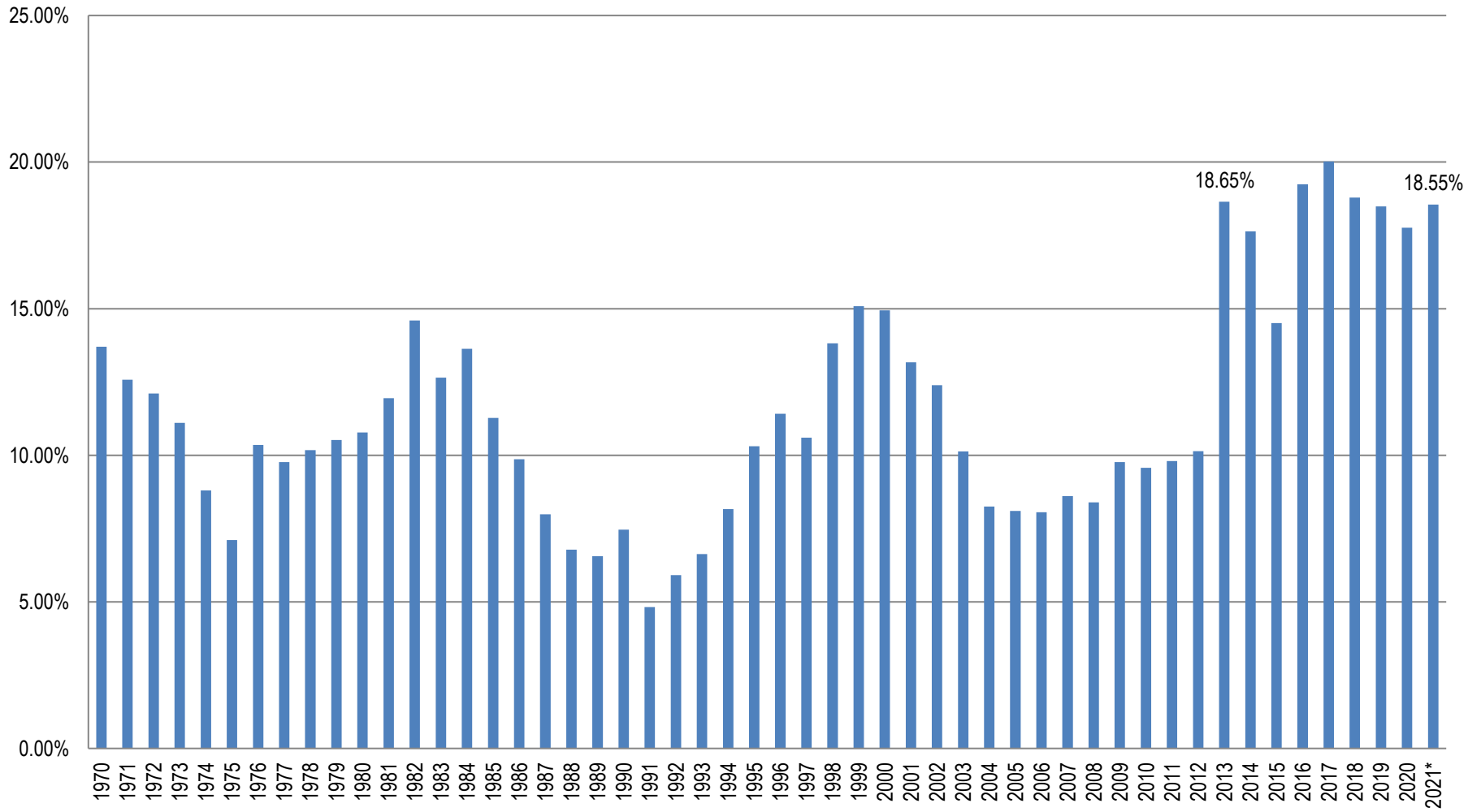
Periodo	Presupuesto Gobierno Central en RD\$ Corrientes	Variación Porcentual	Ejecutado Gobierno Central en RD\$ Corrientes	Porcentaje de Ejecución	Presupuesto MINERD en RD\$ Corrientes	Variación Porcentual Presupuesto MINERD	Variación Absoluta	Ejecutado MINERD en Miles de RD\$ Corrientes	Porcentaje de Ejecución MINERD	Porcentaje de Ejecución de MINERD como Gasto del GC	Ejecución Gasto en Educación en RD\$ Corrientes	Variación Porcentual Gasto en Educación	Porcentaje de Ejecución MINERD como % Gasto de Educación	Porcentaje de Ejecución Gasto en Educación como % del PIB	Índice Base 1999	Gasto de la MINERD en RD\$ Constantes	Gasto en Educación en RD\$ Constantes	PIB Corriente (En Millones RD\$)	PIB Constante (En Millones RD\$)	Presupuesto del MINERD como % del PIB	Crecimiento del PIB	Gasto del MINERD como % del PIB	Variación Porcentual Gasto MINERD	Gasto en Educación como % del PIB	Variación Porcentual Gasto en Educación % PIB
1970	247,559		264,800	106.96%	40,406			36,290	89.81%	13.70%	41,964		86.48%	15.85%	1.74	2,085,624	2,411,736	1,485,500	85,373,563	2.72%		2.44%		2.82%	
1971	264,312	6.77%	304,987	115.39%	53,562	32.56%	13,156	38,365	71.63%	12.58%	43,895	4.60%	87.40%	14.39%	1.82	2,107,965	2,411,817	1,666,500	91,565,934	3.21%	7.25%	2.30%	-0.14%	2.63%	-6.76%
1972	300,928	13.85%	334,316	111.09%	53,887	0.61%	325	40,483	75.13%	12.11%	46,409	5.73%	87.23%	13.88%	1.96	2,065,471	2,367,831	1,987,400	101,397,959	2.71%	10.74%	2.04%	-0.27%	2.34%	-11.34%
1973	325,300	8.10%	387,353	119.08%	61,194	13.56%	7,307	43,022	70.30%	11.11%	58,147	25.29%	73.99%	15.01%	2.26	1,903,618	2,572,896	2,344,800	103,752,212	2.61%	2.32%	1.83%	-0.20%	2.48%	6.19%
1974	383,367	17.85%	508,785	132.71%	72,308	18.16%	11,114	44,797	61.95%	8.80%	62,969	8.29%	71.14%	12.38%	2.55	1,756,730	2,469,367	2,925,700	114,733,333	2.47%	10.58%	1.53%	-0.30%	2.15%	-13.21%
1975	486,308	26.85%	664,986	136.74%	76,536	5.85%	4,229	47,261	61.75%	7.11%	66,164	5.07%	71.43%	9.95%	2.92	1,618,527	2,265,878	3,599,200	123,260,274	2.13%	7.43%	1.31%	-0.22%	1.84%	-14.59%
1976	530,514	9.09%	580,628	109.45%	96,144	25.62%	19,607	60,082	62.49%	10.35%	73,994	11.68%	81.31%	12.73%	3.15	1,907,353	2,345,836	3,951,600	125,444,444	2.43%	1.77%	1.52%	0.21%	1.87%	-1.73%
1977	631,345	19.01%	631,345	100.00%	97,415	1.32%	1,271	61,641	63.28%	9.76%	77,424	4.78%	79.62%	12.26%	3.56	1,731,493	2,174,828	4,587,100	128,851,124	2.12%	2.72%	1.34%	-0.18%	1.69%	-9.74%
1978	620,351	-1.74%	689,757	111.19%	97,735	0.33%	320	70,178	71.80%	10.17%	92,767	19.82%	75.65%	13.45%	3.81	1,841,942	2,434,837	4,734,400	124,262,467	2.06%	-3.56%	1.48%	0.14%	1.96%	16.09%
1979	736,745	18.76%	1,018,884	138.30%	116,456	19.16%	18,721	107,323	92.08%	10.52%	133,463	43.87%	80.35%	13.10%	4.16	2,577,705	3,208,241	5,498,800	132,182,692	2.12%	6.37%	1.95%	0.47%	2.43%	23.87%
1980	864,913	17.40%	1,065,533	123.20%	117,425	0.83%	969	114,795	97.76%	10.77%	138,515	3.79%	82.88%	13.00%	4.86	2,362,047	2,850,109	6,761,300	139,121,399	1.74%	5.25%	1.70%	-0.25%	2.05%	-15.59%
1981	1,214,199	40.38%	1,098,133	90.44%	143,547	22.25%	26,122	131,225	91.42%	11.95%	160,913	16.17%	81.55%	14.65%	5.22	2,513,897	3,082,624	7,561,300	144,852,490	1.90%	4.12%	1.74%	0.04%	2.13%	3.88%
1982	1,054,473	-13.15%	1,016,600	96.41%	151,448	5.50%	7,901	148,424	98.00%	14.60%	166,895	3.72%	88.93%	16.42%	5.89	2,519,935	2,833,525	8,267,400	140,363,328	1.83%	-3.10%	1.80%	0.06%	2.02%	-5.14%
1983	1,017,192	-3.54%	1,199,235	117.90%	159,761	5.49%	8,313	151,657	94.93%	12.65%	177,382	6.28%	85.50%	14.79%	6.22	2,438,218	2,851,794	9,220,600	148,241,158	1.73%	5.61%	1.64%	-0.15%	1.92%	-4.70%
1984	1,345,751	32.30%	1,283,929	95.41%	163,666	2.44%	3,905	175,007	106.93%	13.63%	197,726	11.47%	88.51%	15.40%	7.48	2,340,522	2,644,369	11,594,000	155,056,923	1.41%	4.60%	1.51%	-0.14%	1.71%	-11.35%
1985	1,374,475	2.13%	1,894,258	137.82%	200,494	22.50%	36,828	213,592	106.53%	11.28%	239,989	21.37%	89.00%	12.67%	10.87	1,965,485	2,208,384	15,701,800	144,488,599	1.28%	-6.82%	1.36%	-0.15%	1.53%	-10.38%
1986	2,161,093	57.23%	2,270,524	105.06%	249,459	24.22%	48,965	235,953	89.78%	9.86%	282,497	17.71%	79.28%	12.44%	11.70	1,914,570	2,415,066	17,780,700	152,006,951	1.40%	5.20%	1.26%	-0.10%	1.59%	3.95%
1987	2,249,432	4.09%	3,293,179	146.40%	267,161	7.10%	17,701	262,902	98.41%	7.98%	321,614	13.85%	81.74%	9.77%	13.28	1,979,334	2,421,360	22,403,600	168,671,807	1.19%	10.96%	1.17%	-0.09%	1.44%	-9.65%
1988	3,205,206	42.49%	4,877,398	152.17%	340,207	27.34%	73,046	330,495	97.15%	6.78%	492,301	53.07%	67.13%	10.09%	19.11	1,729,571	2,576,343	32,850,500	171,915,505	1.04%	-1.72%	1.04%	-0.17%	1.50%	4.39%
1989	6,358,376	98.38%	6,060,185	95.31%	418,730	23.08%	78,523	397,573	94.95%	6.56%	574,787	16.76%	69.17%	9.48%	26.88	1,479,197	2,138,534	42,393,000	157,725,907	0.99%	-8.25%	0.94%	-0.07%	1.36%	-9.53%
1990	6,520,045	2.54%	7,171,810	110.00%	540,320	29.04%	121,590	535,353	99.08%	7.46%	707,487	23.09%	75.67%	9.86%	40.44	1,323,795	1,749,439	60,305,206	149,119,754	0.90%	-5.46%	0.89%	-0.05%	1.17%	-13.47%
1991	6,520,045	0.00%	10,815,229	165.88%	540,320	0.00%	-	521,888	96.59%	4.83%	936,349	32.35%	55.74%	8.66%	59.48	877,419	1,574,227	123,551,907	207,720,323	0.44%	39.30%	0.42%	-0.47%	0.76%	-35.40%
1992	13,880,268	112.89%	16,815,229	121.14%	1,090,361	101.80%	550,041	993,638	91.13%	5.91%	1,501,629	60.37%	67.14%	8.93%	62.01	1,602,301	2,421,467	233,829,689	207,627,581	0.75%	12.62%	0.68%	0.26%	1.04%	36.59%
1993	22,717,549	63.67%	20,380,431	89.71%	2,109,693	93.49%	1,019,332	1,351,586	64.07%	6.63%	2,007,421	33.68%	67.33%	9.85%	65.27	2,070,790	3,075,607	163,513,030	250,521,345	1.29%	7.09%	0.83%	0.14%	1.23%	18.60%
1994	23,177,451	2.02%	21,374,274	92.21%	2,526,539	19.76%	416,846	1,744,655	69.05%	8.16%	2,605,988	29.82%	66.95%	12.19%	70.66	2,469,055	3,688,024	184,769,395	261,487,722	1.37%	4.38%	0.94%	0.12%	1.41%	14.88%
1995	24,574,960	6.03%	22,837,738	92.93%	3,200,011	26.66%	673,472	2,354,168	73.57%	10.31%	3,019,328	15.86%	77.97%	13.22%	79.52	2,960,523	3,797,007	214,122,963	269,273,938	1.49%	2.98%	1.10%	0.16%	1.50%	-0.02%
1996	26,968,143	9.74%	26,398,978	97.89%	3,897,377	21.79%	697,366	3,012,702	77.30%	11.41%	3,536,593	17.13%	85.19%	13.40%	83.81	3,594,568	4,219,642	235,250,331	280,685,967	1.66%	4.24%	1.28%	0.18%	1.50%	6.61%
1997	26,968,143	0.00%	34,540,083	128.08%	3,897,377	0.00%	-	3,660,825	93.93%	10.60%	4,777,629	35.09%	76.62%	13.83%	90.77	4,033,247	5,263,666	280,362,824	308,884,652	1.39%	10.05%	1.31%	0.03%	1.70%	13.35%
1998	38,749,978	43.69%	39,120,044	100.96%	6,010,419	54.22%	2,113,042	5,404,954	89.93%	13.82%	6,083,121	27.33%	88.85%	15.55%	95.15	5,680,330	6,393,050	318,648,991	334,883,810	1.89%	8.42%	1.70%	0.39%	1.91%	12.03%
1999	44,671,706	15.28%	46,279,633	103.60%	6,617,652	10.10%	607,233	6,981,475	105.50%	15.09%	7,544,580	24.02%	92.54%	16.30%	101.31	6,891,200	7,447,024	350,520,117	345,987,678	1.89%	3.32%	1.99%	0.30%	2.15%	12.75%
2000	50,366,390	12.75%	50,463,664	100.19%	8,164,464	23.37%	1,546,812	7,541,514	92.37%	14.94%	8,522,319	12.96%	88.49%	16.89%	109.13	6,910,578	7,809,328	393,302,968	360,398,578	2.08%	4.17%	1.92%	-0.07%	2.17%	0.67%
2001	65,176,720	29.41%	64,312,220	98.67%	9,856,995	20.73%	1,692,531	8,472,325	85.95%	13.17%	10,011,729	17.48%	84.62%	15.57%	118.83	7,129,786	8,425,253	427,319,066	359,605,374	2.31%	-0.22%	1.98%	0.07%	2.34%	8.13%
2002	73,961,639	13.48%	73,850,012	99.85%	10,848,882	10.06%	991,887	9,151,042	84.35%	12.39%	11,772,437	17.59%	77.73%	15.94%	125.03	7,319,077	9,415,690	381,852,507	477,430,190	2.27%	6.19%	1.92%	-0.07%	2.47%	5.24%
2003	82,999,715	12.22%	93,650,189	112.83%	11,029,170	1.66%	180,289	9,483,637	85.99%	10.13%	10,091,840	-14.28%	93.97%	10.78%	159.35	5,951,451	6,333,129	628,611,040	394,484,493	1.75%	3.31%	1.51%	-0.41%	1.61%	-34.89%
2004	167,806,822	102.18%	142,062,221	84.66%	12,770,606	15.79%	1,741,436	11,724,659	91.81%	8.25%	11,779,904	16.73%	99.53%	8.29%	241.36	4,857,747	4,880,636	935,984,735	387,796,128	1.36%	-1.70%	1.25%	-0.26%	1.26%	-21.61%
2005	236,381,617	40.87%	189,563,080	80.19%	17,091,353	33.83%	4,320,747	15,352,993	89.83%	8.10%	17,197,603	45.99%	98.27%	9.07%	251.47	6,105,298	6,838,829	1,083,445,001	430,844,634	1.58%	11.10%	1.42%	0.16%	1.59%	26.12%
2006	258,277,154	9.26%	220,618,312	85.42%	19,860,245	16.20%	2,768,892	17,783,387	89.54%	8.06%	21,462,413	24.80%	82.86%	9.73%	270.51	6,574,022	7,934,055	1,261,399,668	466,904,265	1.57%	8.23%	1.41%	-0.01%	1.70%	7.19%
2007	244,581,269	-5.30%	270,618,972	110.65%	25,511,782	28.46%	5,651,538	23,284,254	91.27%	8.60%	29,308,923	36.56%	79.44%	10.83%	287.13	8,109,307	10,207,545	1,458,416,518	507,928,993	1.75%	8.93%	1.60%	0.19%	2.01%	18.11%
2008	309,433,249	26.52%	340,324,776	109.98%	29,244,231	14.63%	3,732,448	28,575,152	97.71%	8.40%	35,242,690	20.25%	81.08%	10.36%	317.70	8,994,382	11,093,072	1,661,642,680	523,022,562	1.76%	2.97%	1.72%	0.12%	2.12%	5.54%
2009	337,547,951	9.09%	322,785,573	95.63%	33,111,956	13.23%	3,867,725	31,535,209	95.24%	9.77%	40,178,818	14.01%	78.49%	12.45%	322.28	9,785,034	12,467,053	1,736,041,064	538,674,775	1.91%	2.99%	1.82%	0.10%	2.31%	9.12%
201																									

## Gasto en Educación como porcentaje del PIB Corriente (Toda la función) (1970-2021)

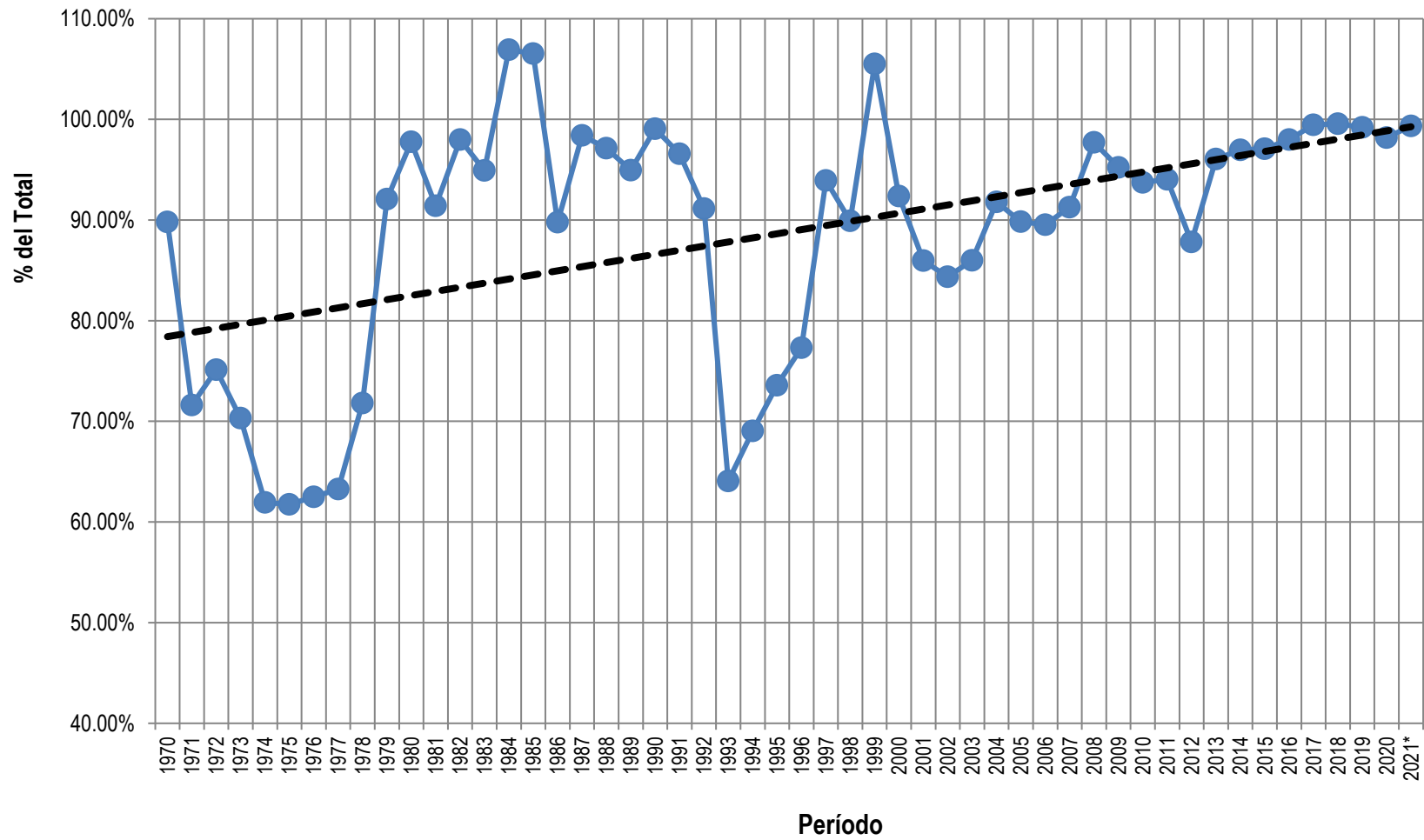
● Gasto en Educación como % del PIB



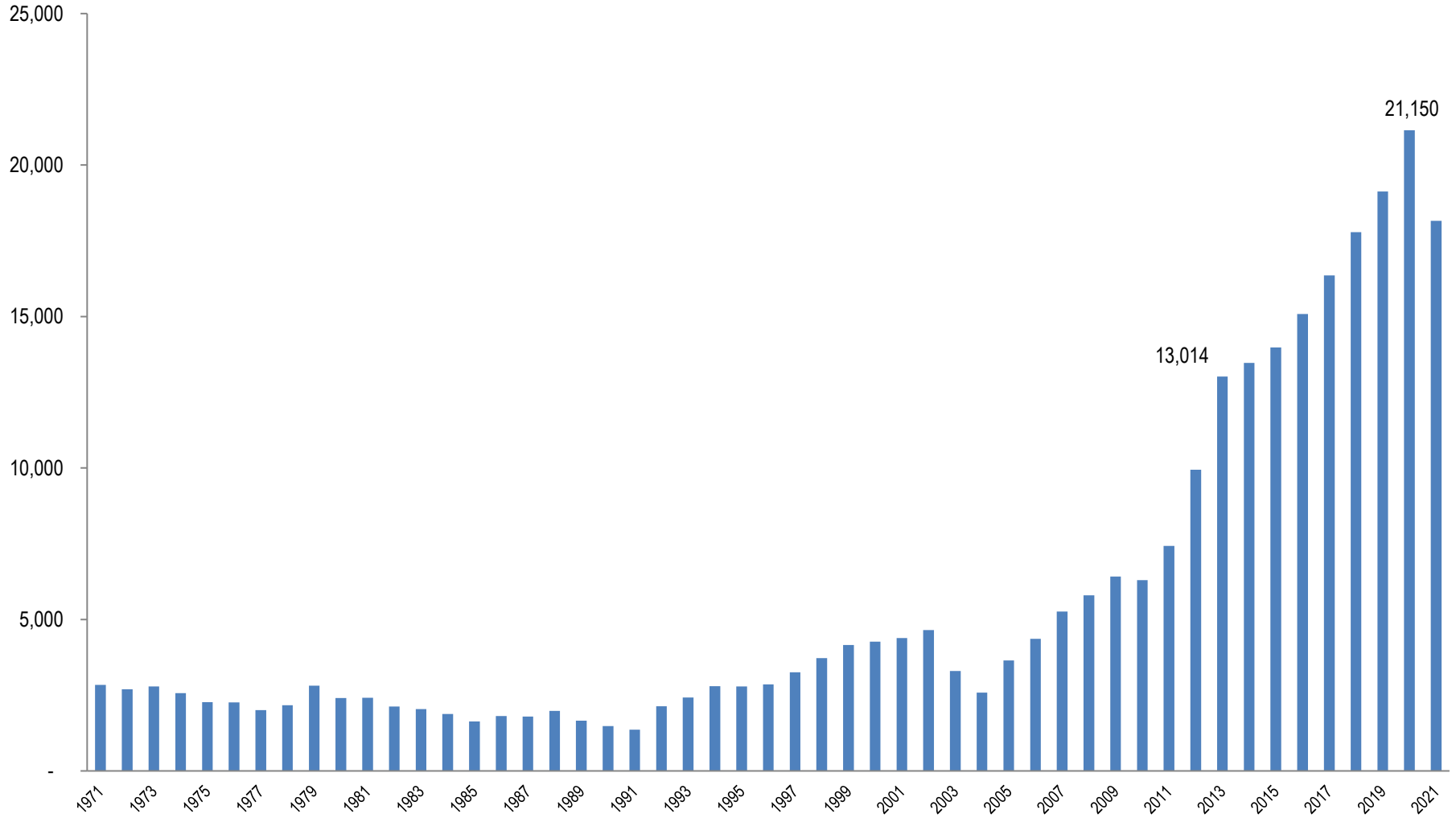
**Porcentaje de Ejecución  
Ministerio de Educación  
Como Gasto del Gobierno Central  
1970-2021**



# Porcentaje de Ejecución Ministerio de Educación Como % del Total Presupuestado 1970-2021



**Gasto Promedio por Estudiantes  
En RD\$ Constantes  
Indice base 1999  
1971-2021**

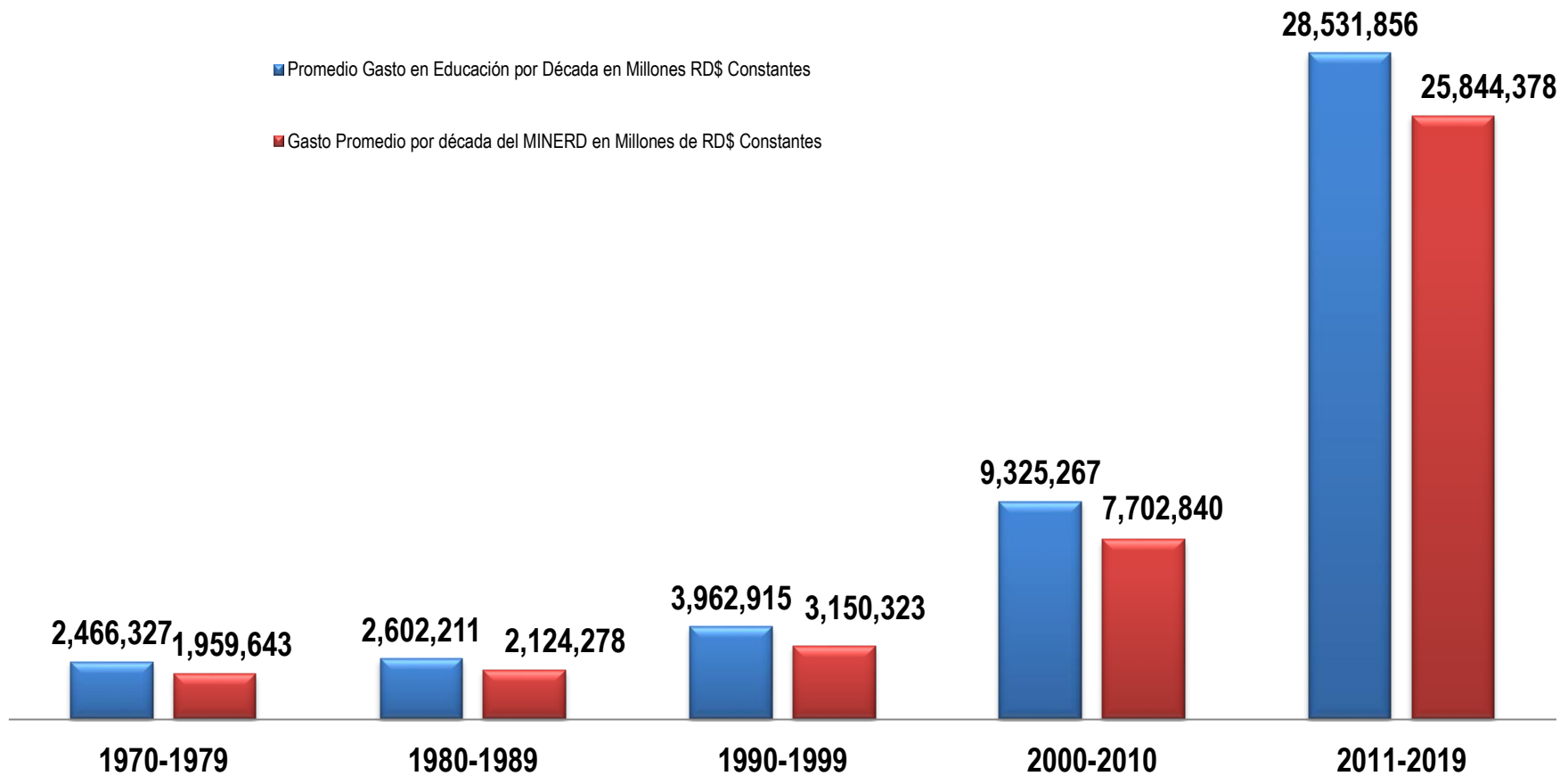


# Comparación Ejecución Gasto en Educación

## Gasto del MINERD

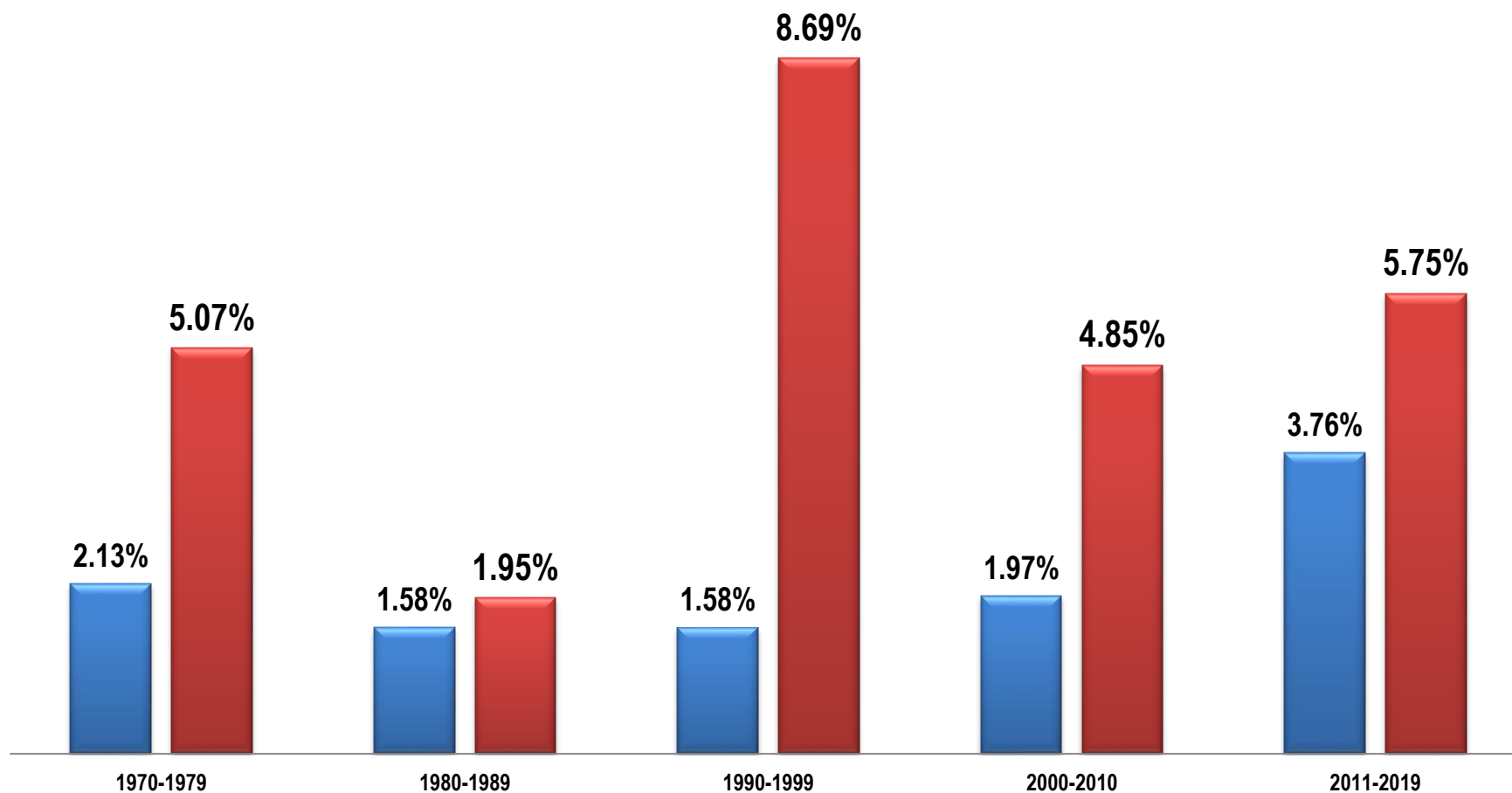
### Índice base 1999

#### (Por década)

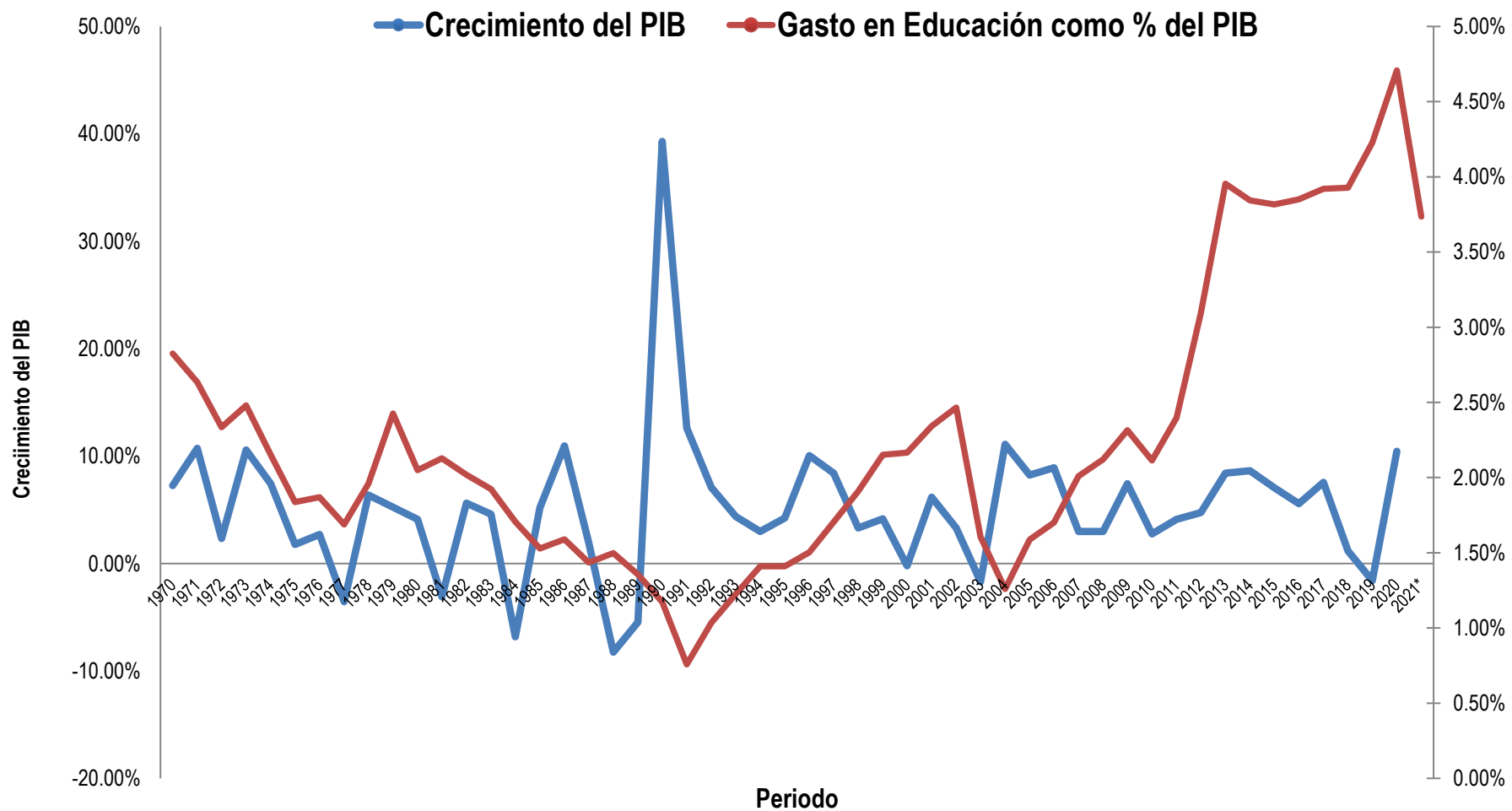


## Promedio Ejecución en Educación como Porcentaje del PIB (Por Década)

- Gasto en Educación como Porcentaje del PIB
- Crecimiento del PIB por Década



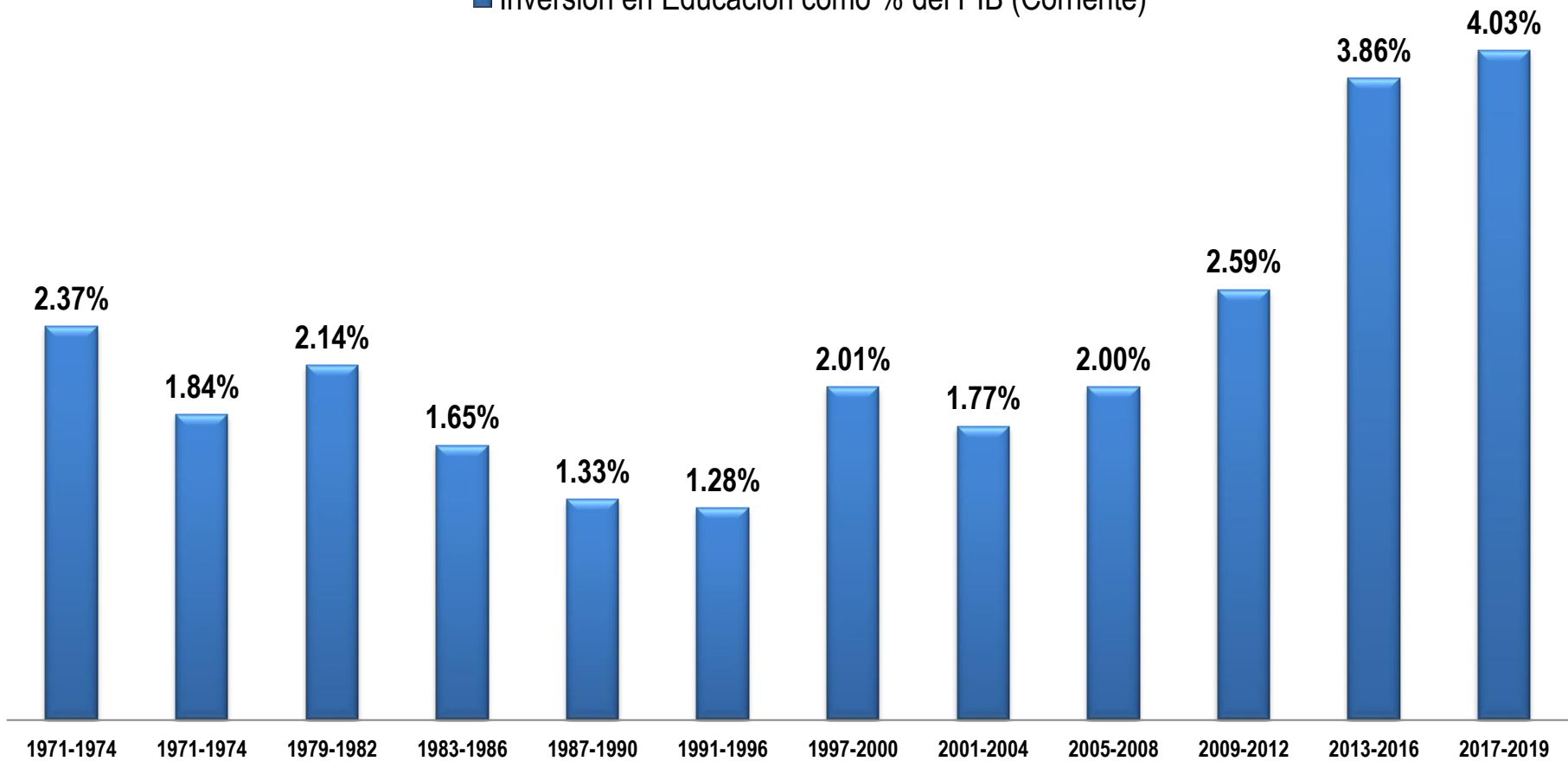
## Gasto en Educación como Porcentaje del PIB y Crecimiento del PIB 1971-2021



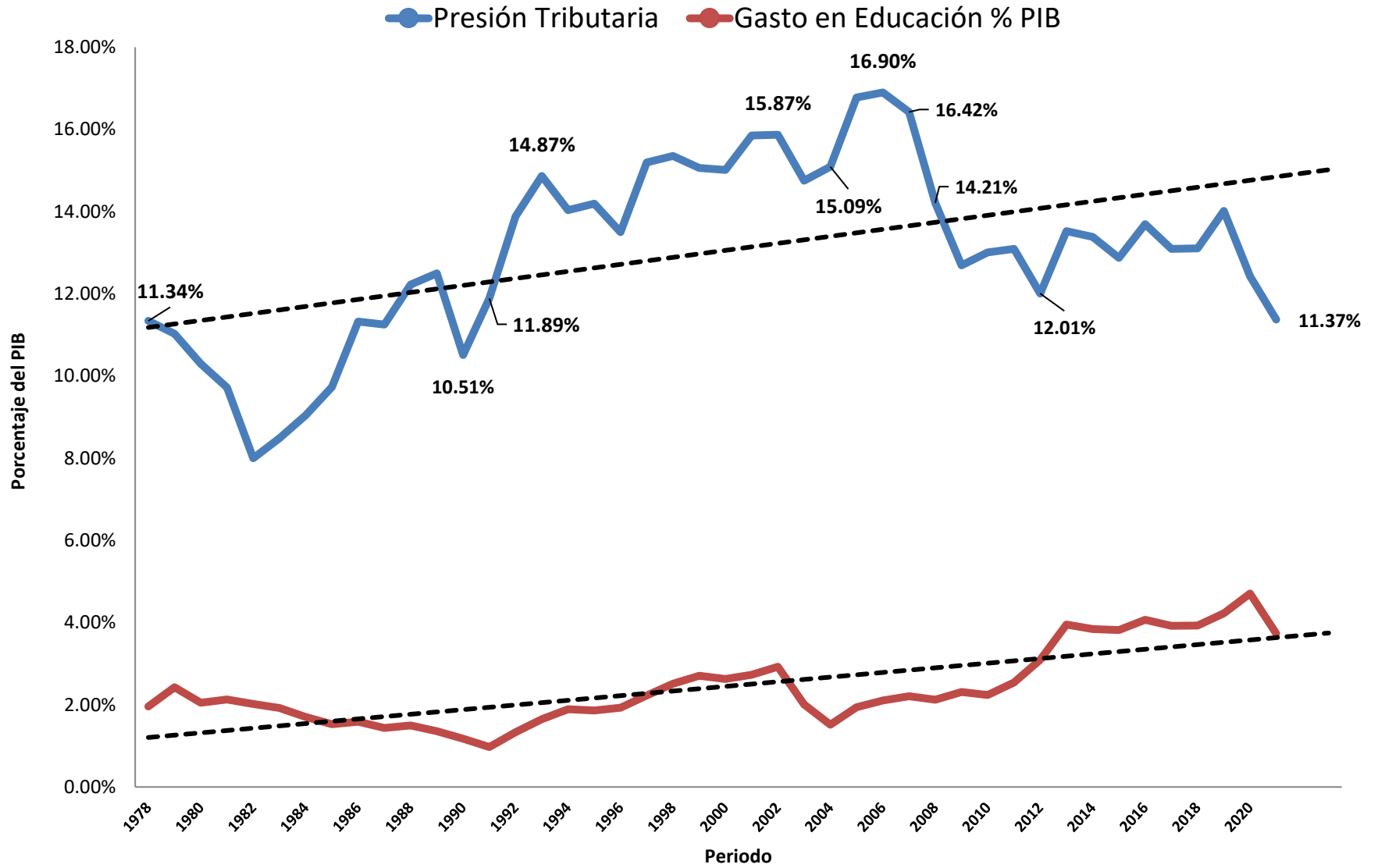


**Inversión en Educación como % del PIB  
Por Periodo Gubernamentales  
De 1971-2019  
(En base a lo ejecutado por período)**

■ Inversión en Educación como % del PIB (Corriente)



# Presión Tributaria & Inversión en Educación 1978-2021



## Comportamiento de la Inversión en Educación en función de la Presión Tributaria 1978-2021

